

BUILD BETTER. BUILD STRONGER. BUILD TO LAST.



INNOVATIVE POST-FRAME FOUNDATIONS



INNOVATIVE POST-FRAME FOUNDATIONS

Challenging conventional thinking

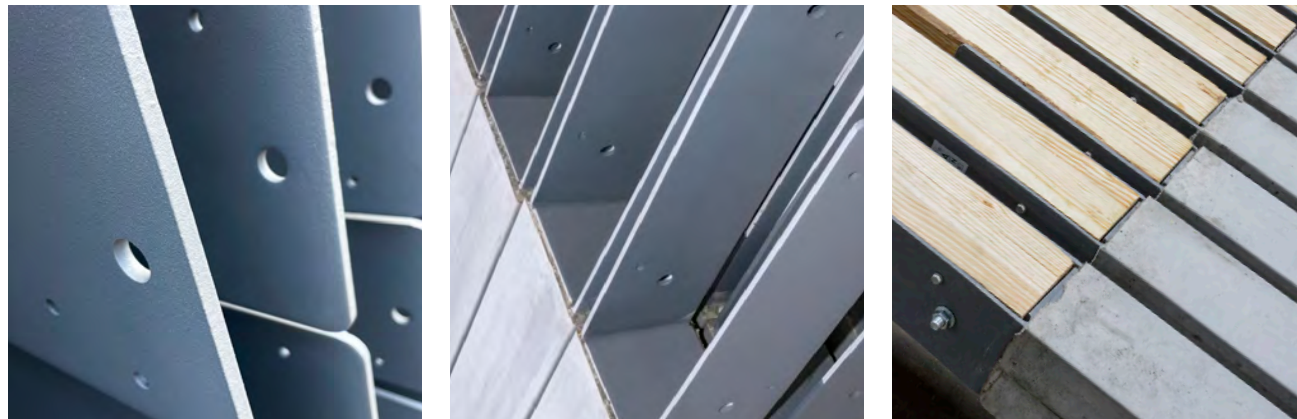
# WE DEVELOP SOLUTIONS THAT LAST GENERATIONS

Post-frame construction methods and materials have evolved over time to maximize strength and efficiency. In the relentless effort to prevent wood rot, builders implemented a range of preventative measures to extend the service life of wood columns embedded in the ground. We challenge conventional thinking with truly innovative solutions that eliminate wood from the ground entirely.

At Perma-Column®, we believe structures should be built to last generations. It is our passion to create innovative building products that drive the

success of post-frame construction. Our mission is to elevate and improve the performance of builders and the post-frame structures they create. We are dedicated to advancing the quality and success of the post-frame industry.

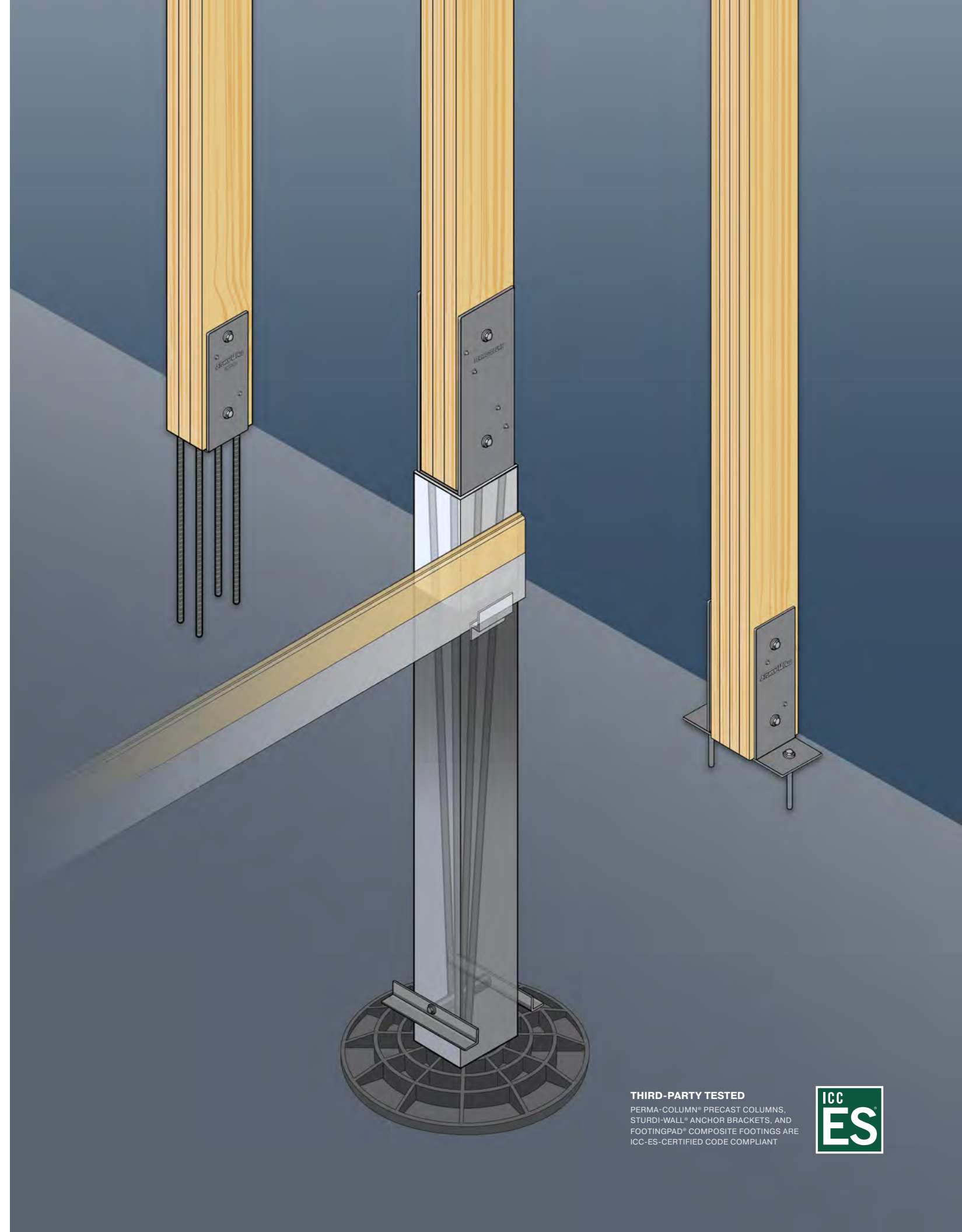
Certified by the International Code Council (ICC), we offer a comprehensive line of American-made, permanent foundation solutions that deliver long-lasting benefits to builders and consumers. We are proud to say we help you build better, build stronger, and build to last.



Innovative foundation solutions with the strength of American-made steel, combined with specially formulated rebar-reinforced precast concrete.

© 2025 Perma-Column, LLC. All rights reserved.

[permacolumn.com](https://permacolumn.com)



**THIRD-PARTY TESTED**  
PERMA-COLUMN® PRECAST COLUMNS,  
STURDI-WALL® ANCHOR BRACKETS, AND  
FOOTINGPAD® COMPOSITE FOOTINGS ARE  
ICC-ES-CERTIFIED CODE COMPLIANT







PRECAST CONCRETE COLUMNS

Elevating wood out of the ground

# WE LIFT THE ENTIRE POST-FRAME INDUSTRY

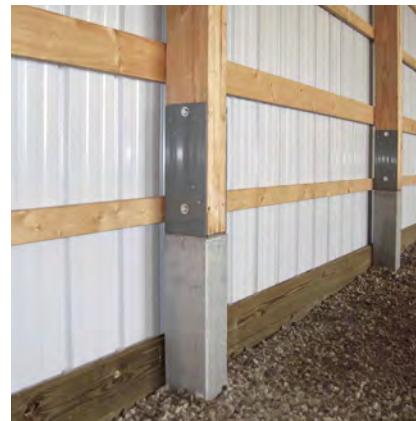
Since the introduction of Perma-Column® precast concrete columns in 2003, builders and consumers have benefited from the only enduring solution that combines the economy of post-frame construction with the durability of a concrete foundation.

The revolutionary design of our precast column eliminates decay by elevating wood completely out of the ground. Robotically welded steel brackets with reinforcement bars run the entire length of specially formulated precast concrete columns. A super-durable powder coating protects against rust. Three times stronger than standard concrete, this innovative solution provides lasting support

for solid wood posts, nail-laminated columns, or glue-laminated columns—ensuring the post-frame foundation will never rot.

## A solid foundation for sales growth

More than ever, builders turn to Perma-Column® to meet the demands for permanent foundation solutions. Certified by the International Code Council (ICC) for code-compliance, and backed by a lifetime warranty, Perma-Column® ensures unmatched performance for all types of post-frame structures, including commercial, residential, agricultural, and equestrian applications.



Precast concrete columns install using traditional post-frame methods. Wood columns are elevated out of the ground, ensuring your foundation will last.





Investing in composite materials

# WE SAVE TIME, LABOR, AND HASSLE ON THE JOB

Compared to concrete—which is heavy, requires mixing and curing time, and is prone to cracking—FootingPad® composite footings are easy to handle, guaranteed to perform, and allow you to complete projects faster. FootingPad® footings are engineered using a specially formulated, fiber-reinforced composite that is light in weight while providing exceptional strength.

FootingPad® footings provide the fastest, most economical means to build your post-supported structure. The lightweight design evenly distributes post loads, and saves hours of back-breaking work. Available in a range of sizes, FootingPad® footers

are guaranteed to exceed the load capacity of all soil types when using the correct size for your application. FootingPad® can be used in most Type V construction, subject to loading limits.

## Advanced design is superior to concrete

FootingPad® composite post footings have been independently tested and certified by ICC-ES as a code-compliant alternative to concrete footings. With a ten-year track record, lifetime guarantee, and over 1 million in the ground, FootingPad® is trusted by building contractors and code officials throughout the United States.



FootingPad® composite footings are lightweight, extremely durable, and engineered to meet or exceed the load capacity of concrete.





Designing better foundation systems

# WE DEFINE BETTER METHODS OF BUILDING

Wood should not touch the ground. EVER. Our patented Perma-Column® precast concrete skirt boards totally eliminate wood contact with soil. The hybrid design prevents wood rot or warp and makes them stronger, straighter, and longer lasting than standard treated wood skirt boards.

## Structural integrity, enhanced service life

Engineered for superior performance, precast skirt boards are manufactured to the same dimensions as standard treated skirt boards. The revolutionary

design features a 4-inch concrete base secured to wood with stainless-steel shear studs. For added strength and stability, basalt composite rebar runs the full length of the precast concrete section.

Precast skirt boards install quickly using standard tools. Galvanized mounting brackets streamline the installation process. Attaching to a Perma-Column® precast column with a single concrete nail, the bracket enables accurate placement and hands-free fastening of each precast skirt board. This is the new way to build post-frame.



The hybrid design of precast skirt boards eliminates all wood contact with the ground. Galvanized mounting brackets simplify installation.







PROFESSIONAL-GRADE ANCHOR BRACKETS

Engineering superior products

# WE CONNECT WITH THE NEEDS OF BUILDERS

Tested. Certified. Proven. That's why post-frame builders trust the number-one-selling brand. Sturdi-Wall® brackets are the only ICC-ES-certified anchor brackets on the market, with High-Velocity Hurricane Zone code compliance. These are the world's most durable post-frame brackets.

Stringently engineered, robotically welded, fully powder-coated, and backed by a lifetime warranty, Sturdi-Wall® brackets have a decades-long track record of proven performance—with zero failures. They feature American-made ¼" steel for maximum tensile and yield strength. Engineered flatness of

drill-set brackets maximizes surface-area contact. Welded Lam Plates on wet-set brackets provide added strength and moment value.

## No other bracket even comes close

Every size you need, every configuration, readily available nationwide. High-volume manufacturing ensures availability through local distributors and 2,000+ lumberyards and home centers. Lifetime warranty guarantees every Sturdi-Wall® product to be free from defects in material or manufacturing, protecting you, your business, and your customers.



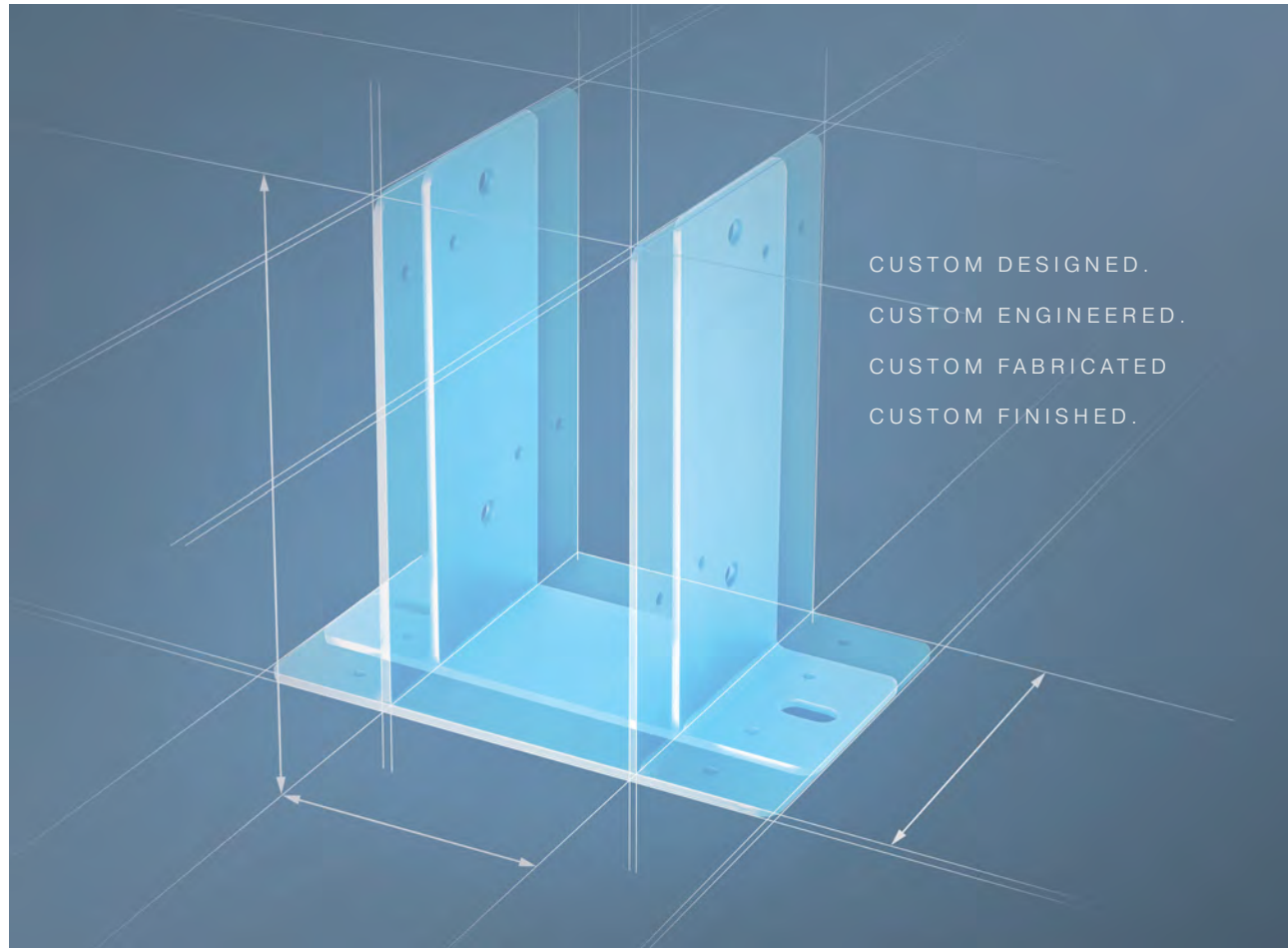
Sturdi-Wall® Drill-Set brackets are designed for concrete that has cured. Sturdi-Wall® Wet-Set brackets are installed while the concrete is still wet.







CUSTOM ANCHOR BRACKETS



CUSTOM DESIGNED.  
CUSTOM ENGINEERED.  
CUSTOM FABRICATED  
CUSTOM FINISHED.

Customizing to your specifications

# WE OPEN THE DOOR TO YOUR GREATER POTENTIAL

Innovation is at the very core of Perma-Column®. We continually seek ways to improve and enhance building methods, to create new products and services, and ultimately to better support builders and the post-frame industry as a whole.

Custom-engineered Sturdi-Wall® anchor brackets are designed to support the unique dimensional

requirements of post-and-beam construction. You specify the dimensional and loading details, we design, engineer, and fabricate the anchor bracket to support your application.

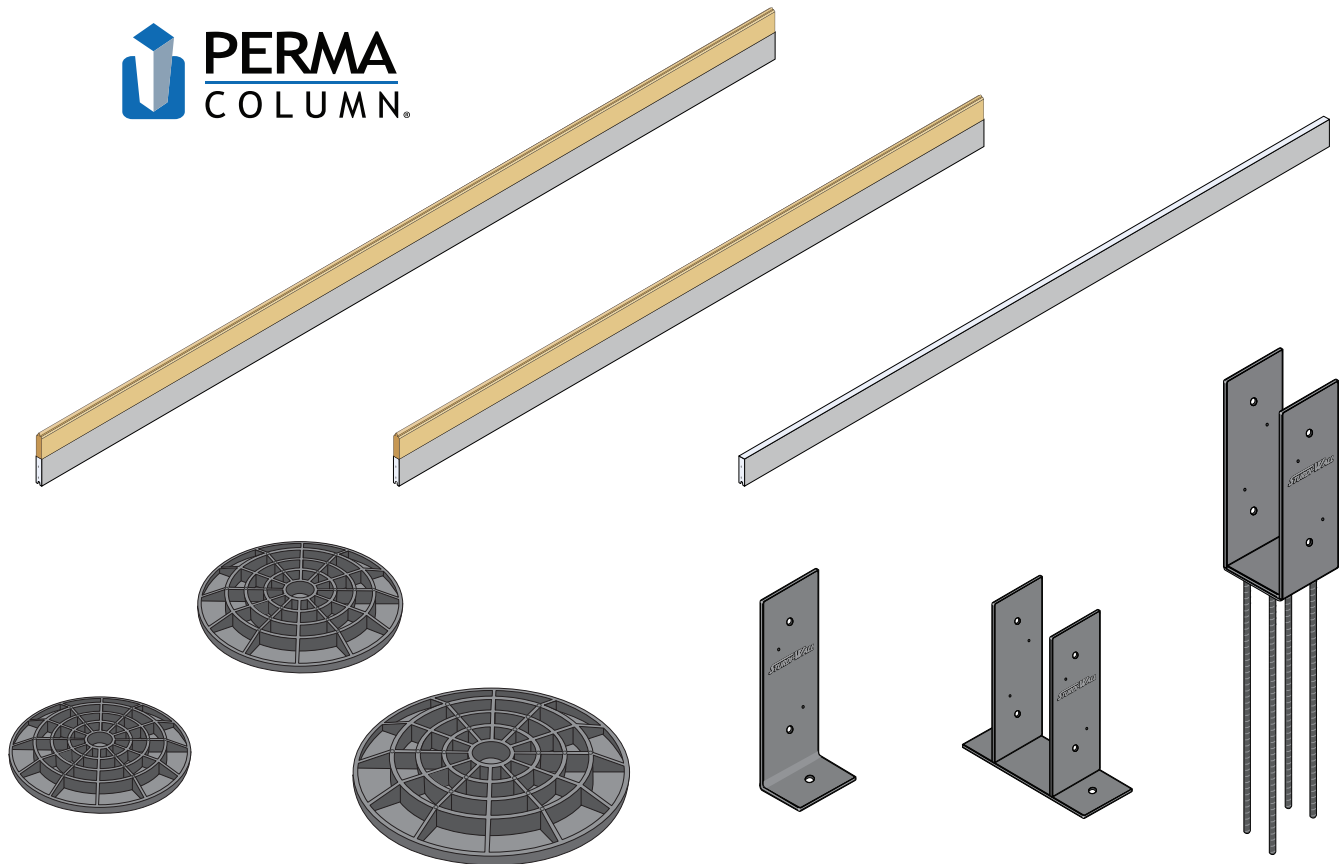
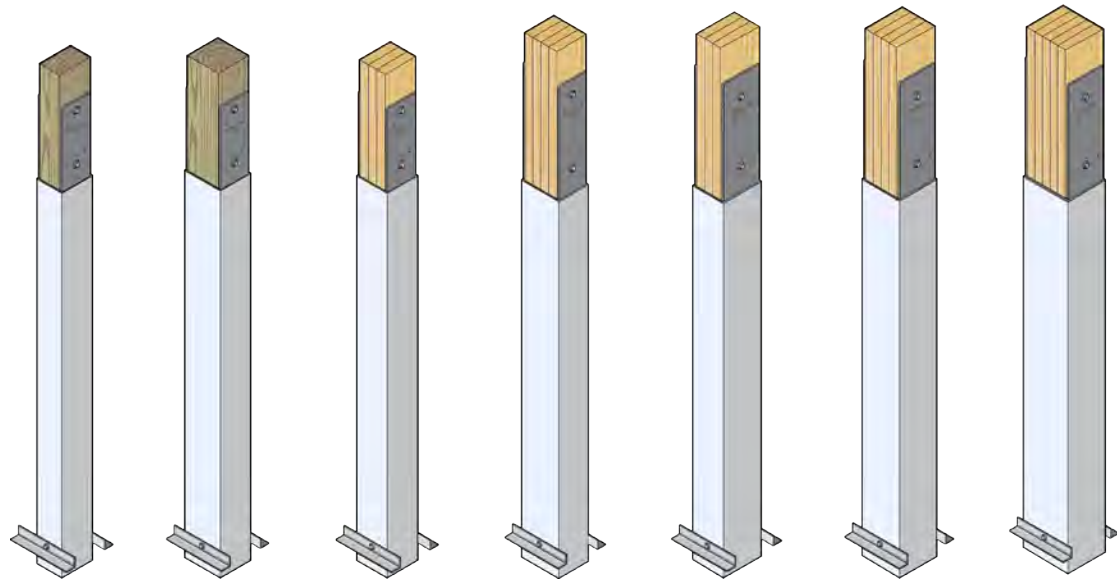
Manufactured with the same high-quality materials and processes we perfected for Sturdi-Wall® brackets, plus a range of powder-coated color options.







INNOVATIVE POST-FRAME FOUNDATIONS



COMPREHENSIVE POST-FRAME FOUNDATION SOLUTIONS

PERMA-COLUMN® PRECAST CONCRETE COLUMNS

Model ID	Type	Bracket height	Description	Weight (lbs.)
PC4600	4" x 6"	13"	3-5/8" pocket fits 4" x 6" post	135
PC6300	3-Ply 6"	13"	4-5/8" pocket fits 3-Ply 6" Nail-Lam column	165
PC6400	4-Ply 2" x 6"	18"	6-1/8" pocket fits 4-Ply 6" Nail-Lam column	215
PC6600	6" x 6"	13"	5-5/8" pocket fits 6" x 6" post	196
PC8300	3-Ply 2" x 8"	18"	4-5/8" pocket fits 3-Ply 8" Nail-Lam column	235
PC8400	4-Ply 2" x 8"	18"	6-1/8" pocket fits 4-Ply 8" Nail-Lam column	290
PC8500	5-Ply 2" x 8"	18"	7-5/8" pocket fits 5-Ply 8" Nail-Lam column	345
GLULAM				
PC6300GL	3-Ply 6"	13"	4-3/16" pocket fits 3-Ply 6" Glulam column	165
PC6400GL	4-Ply 2" x 6"	18"	5-9/16" pocket fits 4-Ply 6" Glulam column	215
PC8300GL	3-Ply 2" x 8"	18"	4-3/16" pocket fits 3-Ply 8" Glulam column	235
PC8400GL	4-Ply 2" x 8"	18"	5-9/16" pocket fits 4-Ply 8" Glulam column	290
PC8500GL	5-Ply 2" x 8"	18"	6-15/16" pocket fits 5-Ply 8" Glulam column	345

PERMA-COLUMN® PRECAST SKIRT BOARDS

Model ID	Description	Weight (lbs.)	Pallet Qty (count)
SKB080	8' skirt board (T&G 1-1/2" x 7-1/2")	56	25
SKB100	10' skirt board (T&G 1-1/2" x 7-1/2")	74	25
SKBW80	8' walk-door stiffener (1-1/2" x 4")	45	25

FOOTINGPAD® COMPOSITE POST FOOTERS

Model ID	Type	3,000 psf Soil Capacity	Best for	Weight (lbs.)
FP-10	10"	1,622 lbs.	Small frame structures	1.2
FP-12	12"	2,356 lbs.	Small frame structures	2.5
FP-16	16"	4,200 lbs.	Large post-frame structures	4.7
FP-20	20"	6,545 lbs.	Large post-frame structures	8.5
FP-24	24"	9,327 lbs.	Large post-frame structures	14

STURDI-WALL® DRILL-SET ANCHOR BRACKETS

Model ID	Type	Bracket height	Description	Weight (lbs.)
SW46	4" x 6"	13"	3-5/8" pocket fits 4" x 6" post	13
SW63	3-Ply 6"	13"	4-5/8" pocket fits 3-Ply 6" Nail-Lam column	13
SW64	4-Ply 6"	13"	6-1/8" pocket fits 4-Ply 6" Nail-Lam column	13
SW66	6" x 6"	13"	5-5/8" pocket fits 6" x 6" post	13
SW83	3-Ply 8"	18"	4-5/8" pocket fits 3-Ply 8" Nail-Lam column	24
SW84	4-Ply 8"	18"	6-1/8" pocket fits 4-Ply 8" Nail-Lam column	24
SW85	5-Ply 8"	18"	7-5/8" pocket fits 5-Ply 8" Nail-Lam column or 8" x 8" post	26
SW88	8" x 8"	18"	8-1/8" pocket fits 8" x 8" architectural post	27
GLULAM				
SW63GL	3-Ply 6"	13"	4-3/16" pocket fits 3-Ply 6" Glulam column	13
SW64GL	4-Ply 6"	13"	5-9/16" pocket fits 4-Ply 6" Glulam column	13
SW83GL	3-Ply 8"	18"	4-3/16" pocket fits 3-Ply 8" Glulam column	24
SW84GL	4-Ply 8"	18"	5-9/16" pocket fits 4-Ply 8" Glulam column	24
SW85GL	5-Ply 8"	18"	6-15/16" pocket fits 5-Ply 8" Glulam column or 8" x 8" post	26

STURDI-WALL® UNIVERSAL DRILL-SET ANCHOR BRACKETS

Model ID	Type	Bracket height	Description	Weight (lbs.)
SW60	6" universal	13"	Used in pairs to fit odd-sized columns, or at corners and doors	6
SW80	8" universal	18"	Used in pairs to fit odd-sized columns, or at corners and doors	10

STURDI-WALL® PLUS WET-SET ANCHOR BRACKETS

Model ID	Type	Bracket height	Description	Weight (lbs.)
SWP46	4" x 6"	13"	3-5/8" pocket fits 4" x 6" post	16
SWP63	3-Ply 6"	13"	4-5/8" pocket fits 3-Ply 6" Nail-Lam column	16
SWP66	6" x 6"	13"	5-5/8" pocket fits 6" x 6" post	17
SWP64	4-Ply 6"	18"	6-1/8" pocket fits 4-Ply 6" Nail-Lam column	21
SWP83	3-Ply 8"	18"	4-5/8" pocket fits 3-Ply 8" Nail-Lam column	27
SWP84	4-Ply 8"	18"	6-1/8" pocket fits 4-Ply 8" Nail-Lam column	28
SWP85	5-Ply 8"	18"	7-5/8" pocket fits 5-Ply 8" Nail-Lam column or 8" x 8" post	29
SWP88	8" x 8"	18"	8-1/8" pocket fits 8" x 8" architectural post	30
GLULAM				
SWP63GL	3-Ply 6"	13"	4-3/16" pocket fits 3-Ply 6" Glulam column	16
SWP64GL	4-Ply 6"	18"	5-9/16" pocket fits 4-Ply 6" Glulam column	21
SWP83GL	3-Ply 8"	18"	4-3/16" pocket fits 3-Ply 8" Glulam column	27
SWP84GL	4-Ply 8"	18"	5-9/16" pocket fits 4-Ply 8" Glulam column	28
SWP85GL	5-Ply 8"	18"	6-15/16" pocket fits 5-Ply 8" Glulam column or 8" x 8" post	29



Locate a distributor near you:  
[permacolumn.com](https://permacolumn.com) | 800-622-7190



## SUSTAINABLY MANUFACTURED. NATIONWIDE AVAILABILITY.

We care about our impact on the environment. Perma-Column® is an environmentally friendly alternative to treated wood. Its longevity maximizes use of resources. Its design keeps chemically treated wood out of the ground. To cut down on shipping, our precast columns are manufactured at authorized precaster locations across North America.



### “Strength.

That’s why we use Sturdi-Wall on every project.”

Kyle Stumpenhorst  
Rural Renovators



### “Built to last.

It’s why we design every building with Perma-Column.”

Jason Gerber  
Meyer Building



**BUILD BETTER. BUILD STRONGER. BUILD TO LAST.**



Locate a distributor near you:

[permacolumn.com](http://permacolumn.com) | 800-622-7190